

CHELAN COUNTY SHERIFF'S OFFICE ANNUAL REPORT 2018

CHELAN COUNTY SHERIFF'S OFFICE
 401 WASHINGTON STREET, LEVEL 1
 WENATCHEE, WA 98801
<http://www.co.chelan.wa.us/sheriff>

 Facebook: [chelancountysheriffsoffice](https://www.facebook.com/chelancountysheriffsoffice)
 Twitter: [@chelansheriff](https://twitter.com/chelansheriff)



Resiliency In the Midst of Change

I recently came across some information on change that suggested that the rate of change, known as the “Knowledge Doubling Curve”. At the turn of the 20th century it was estimated to be at 100 years. Time and our desire to create new things and advance technologies coupled with an ability to learn have changed the pace of the curve drastically. To put it in basic terminology, “Change is coming and it’s coming fast.”

Leadership is not a capability reserved for a select few. Rather, leadership is an ability learned by those who choose to do so. Brian Herbert, a New York Times best-selling author said, “The capacity to learn is a gift; the ability to learn is a skill; the willingness to learn is a choice.”

I believe that in our current culture and society, we as individuals, families, communities and local governments must be in constant preparation for change in order to be good stewards, make a positive impact while making the most from our available resources.

Resilience is defined as (1) “The capacity to recover quickly from difficulties; toughness”, (2) “The power or ability to return to the original form, position after being bent, compressed, or stretched; elasticity”, (3) “Ability to recover readily from illness, depression, or adversity; buoyancy.”

Max De Pree warns: “Success can close a mind faster than prejudice and Peter Drucker observed: ‘No one has much difficulty getting rid of the total failures. They liquidate themselves. Yesterday’s success, however, always linger on long beyond their productive life.

Change comes in many shapes and sizes and can be both positive and negative but our ability to be prepared for change matched with a positive mindset can make all the difference as we meet the challenges of an uncertain future together.

Thank you for partnering with us as we strive to maintain resilience as we purposely prepare and plan for change.

Sincerely,



Sheriff Brian Burnett



Patrol

The Patrol Division will always be the face of the Chelan County Sheriff's Office as professional representatives of your community. Your Patrol Deputies cover 2,921 square miles of land, and 73 square miles of water. We accomplish this with 36 Deputies assigned to Patrol along with two Contract City Sergeants. We provide 24 hour law enforcement coverage for our County and Contract City residents. Patrol Deputies regularly assist other area agencies to include the Washington State Patrol, the Wenatchee Police Department, East Wenatchee Police Department, and the Douglas County Sheriff's Office.

Recruiting, hiring, and retaining quality personnel remains a challenge for all law enforcement agencies in the state of Washington. Over the last several years we have worked to make the Chelan County Sheriff's Office a destination agency for candidates looking to make a lateral transfer. We have accomplished this by developing our reputation as a "Values Based" organization with an emphasis on training our staff. In 2018 we were successful in recruiting some of the highest quality experienced candidates available with diverse backgrounds from around the state. This strategy has allowed us to maintain budgeted staffing levels while diversifying the talent within your Sheriff's Office.

In 2018, we again placed a high priority on maintaining our in-house training programs. Deputies receive training on a bi-monthly basis from our own subject matter experts as well as outside instruction. Training areas include De-escalation tactics, Use of Force, Defensive Tactics, and Domestic Violence, and Emergency Vehicle Operation. The training strategies employed at the Chelan County Sheriff's Office have become a model for other agencies around the state looking to employ an economical strategy for highly trained personnel.

We will continue to work to maintain the trust and reputation of integrity with our community members and visitors. Your Chelan County Sheriff's Office Deputies consider it an honor and privilege to serve their community.



S.W.A.T.

Chelan County Regional SWAT consists of partners from Wenatchee Police Department, Chelan County Sheriff's Office, Ballard Ambulance, Cascade Medical Center, and Department of Fish and Wildlife. Team members are recruited, selected, trained, equipped and assigned to resolve critical incidents involving a threat to public safety which would otherwise exceed the capabilities of traditional law enforcement first responders and/or investigative units. A brief 2018 summary of the teams successful activities are below.

13 Direct Calls for Service

Examples of 2018 calls for service:

- SWAT assisted in a large narcotic delivery investigation which took investigators to the Moses Lake area; two subjects were taken into custody by SWAT due to their risk to the public. Subsequently six vehicles, multiple firearms, a kilo of heroin, half pound of cocaine, six pounds of methamphetamine, and \$130,000USD were seized.
- SWAT took a male into custody in the Leavenworth area who had shot at BNSF employees in their performance of duties.
- SWAT assisted Douglas County SRT on three callouts needing additional resources.
- SWAT took a male into custody in the Wenatchee area who Washington State Patrol had probable cause to arrest on Vehicular Manslaughter.
- SWAT took a male into custody wanted for Armed Robbery in Wenatchee area stemming from a case in East Wenatchee.

23 Calls for Consults

- Team leadership was contacted requesting assistance, guidance, and help. These were instances SWAT was not utilized.

92 Community Hours

- Touch a Truck at Town Toyota Center
- Chief for a Day at Memorial Park
- National Night Out on Wenatchee Avenue
- Christmas Shop with a Cop at Hooked on Toys
- Guns and Hoses Table for kid's show and tell at Town Toyota Center



192 Training Hours per member

Examples of some common core competencies trained are:

Officer/victim rescue procedures, direct FIRST AID for members and citizens, Crisis Intervention Training for those in crisis, diversionary devices, fire suppression equipment and use, less-lethal applications, communication procedures, use of force policy and decision making paradigm, K9 integration, team dynamics, adherence to priorities of life matrix, negotiators, firearms qualifications and proficiency, mission analysis/threat assessment, Intelligence gathering techniques, tactical planning, briefing techniques, and large population pre-event surveillance and violence prevention.

Marine Patrol

The Chelan County Sheriff's Office Marine Patrol Unit is responsible for patrolling the waters of Chelan County for the purpose of preventing crime, enforcing federal, state, and county laws. In addition, the Marine Patrol Unit is responsible for performing rescue operations for persons and vessels in distress, assisting other divisions and agencies as needed, maintaining buoys and navigational markers, and investigating marine accidents and incidents.

The major waterways the Chelan County Sheriff's Office Marine Unit is responsible for, include; Lake Chelan (55 miles long), 70 miles of the Columbia River, Lake Wenatchee, Wapato Lake, and the Wenatchee River. There are many other additional lakes and rivers that the marine unit patrols and performs Search and Rescues.

The Marine Patrol Unit consists of:

- 1 3/4 Time Deputy that administers the Marine Patrol Unit
- 1 part time Deputy (Summer Time)
- 1 Sergeant that oversees the Unit
- 5 active volunteers
- 3 boats
- 2 Sea Doo PWCs
- 20 Marine Certified Deputies



In 2018, the Chelan County Marine Patrol vessels spent 415 hours on the waters of Chelan County. Deputies conducted 330 written vessel inspections. They also assisted 17 people on the water that were in need of immediate assistance along with 32 non-emergent vessel assists. Additionally, the Marine Patrol Unit provides presentations to the public to promote boating safety. They also provide a Boating Education class for citizens to obtain their required Boaters Safety Card.

In 2018 Chelan County Marine Patrol continued its partnership with Lake Chelan School District to talk to students about water safety and take students on the waters of Lake Chelan as part of a Lifetime Activities Class. They also partner with Lake Chelan Research Institute to take students from Manson and Chelan out on the lake to give them the opportunity to conduct water quality testing on the lake as part of their learning. These interactions give deputies the ability to build positive relationships with students, as well as promote boating safety. While the students were able to get hands on learning outside the classroom. The Sheriff's Office looks forward to continuing this annual program.

The overall mission of the Chelan County Marine Patrol is to continue to promote safe boating, through education, enforcement, and community interaction. With the ultimate goal of making the waters of Chelan County a safe place for people to recreate.

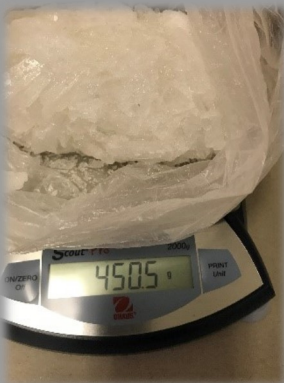
Columbia River Drug Task Force



The Columbia River Drug Task Force had a very successful 2018 campaign. The year started with an investigation of an illegal marijuana operation in Douglas County. After a month long investigation Detectives were able to secure a search warrant and seize over 20 pounds of processed marijuana and over 20 pounds of un-processed marijuana. Along with the illegal marijuana operation a firearm was also taken from the property.



In March, after receiving a tip, the Task Force seized over 18 pounds of methamphetamine from a vehicle. This case is still under investigation and is one of the biggest methamphetamine seizures in Task Force history.



An eager distributor led the Task Force to the Columbia Basin during the summer. After multiple controlled purchases of methamphetamine, Detectives were able to secure search warrants for an apartment in Othello and a residence in Royal City. A multi-agency operation ensued and the Task Force was able to seize over 4 pounds of methamphetamine, 3 pounds of heroin, and 1 pound of cocaine. Over \$125,000 in cash, bank accounts, and assets were seized. Detectives also removed 13 firearms of which 3 were reported as stolen.

The Task Force also worked a tip from the Chelan Valley that led to multiple controlled purchases of methamphetamine from a major distributor. A search warrant was served and over \$5,000 in cash and assets were removed from the property and nearly 1 pound of methamphetamine.



In 2018 the Columbia River Drug Task Force removed nearly 4 pounds of heroin, over 31 pounds of methamphetamine, 1 pound of cocaine, over 40 pounds of marijuana, multiple illegal pharmaceutical pills, and 52 firearms from the streets. It was a successful year from the hard working Detectives.

K9 Unit

The Chelan County Sheriff's Office has 4 working canine teams; 2 patrol dogs, 1 drug detection dog, and 1 SAR (Search & Rescue) K9.

Deputy Mark Hegberg has drug detection Narcotics **K-9 Ruben**. Ruben is a black Labrador mix-breed who was trained for drug detection at the Washington State Penitentiary in Shelton, WA. Dep. Hegberg and Ruben regularly assists the Columbia River Drug Force, Wenatchee Police Department, and all other local law enforcement agencies. He has also searched businesses, schools, and other public buildings which had a need for a drug dog search. During 2018, Ruben's handler was injured, and Ruben's activity decreased. Ruben was put into service in November of 2016. Brief 2018 highlights for Ruben were:

Drug Dog Ruben Incidents by Year;
2016 = 6
2017 = 40
2018 = 12

Deputy Mike Lamon handles **K9 Toro** from Alaska. Toro is also known by his birth-name of Majky. Toro was purchased with a generous donation provided by a resident of the Lake Wenatchee area. Majky is trained in apprehension, tracking, and evidence area search. Majky works with all area law enforcement agencies and the local Multi-agency SWAT team.

Patrol Dog Axel Deployments by Year;
Majky deployments 2018 = 32

In 2014, the Sheriff's Office K9 unit added **Deputy Aaron Shepard** with his patrol dog **Reno**. Reno is a 3 year old German Shepard. Reno is trained in apprehension, tracking, and evidence search. Reno is the Sheriff's Office resident demonstration

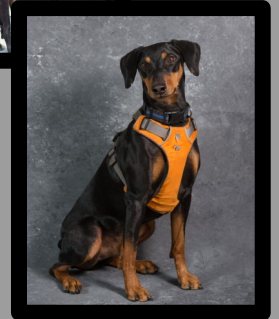
dog and frequently performs with children, at schools, sporting events, and K9 fundraisers. Reno also works closely with the interagency SWAT team, as Deputy Aaron Shepard is an active SWAT Team member. In 2016, Reno was hit by a car while chasing a fleeing felon and suffered a broken elbow. After a complicated surgery and physical therapy, Reno was retired in early 2018,

During the summer of 2017, again due to a generous donation from a Chelan County business, the K9 unit acquired new patrol dog Asa. She is a beautiful Dutch Shepard, also from Alaska. Asa is our first female patrol dog, and she has proven herself to be an important part of the K9 unit. Her handler is **Deputy Brad Norton**, an 11-year veteran of the agency. **Asa** was trained at the same Alaska facility as Majky. She can apprehend, track, and perform area searches for suspects and evidence. During 2018, Asa was deployed 24 times.

In 2015, Sheriff's Office **Corporal Monika Haynes** acquired and began training Search & Rescue dog **Spur**. Spur is a 4 year old German Pinscher and was chosen for his high drive, easy to maintain size/stature, and mobility on the trail. The Sheriff's Office responded to 50 Search and Rescue calls in 2018. Corporal Haynes' dog will also work on evidence detection, emergency response for natural disasters, and urban search and rescue within our local communities. Search and rescue dogs are trained by their handlers, which generally requires about 2 years. The Sheriff's Office is also researching the idea of cross-training Spur in cadaver (deceased person) searches.



Ruben



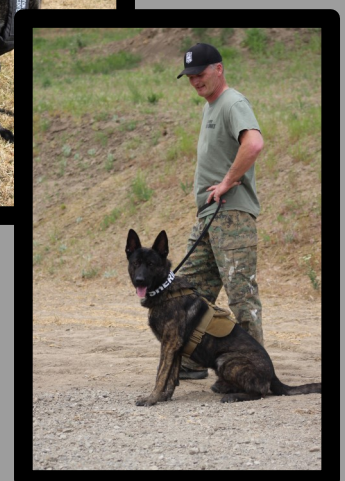
Spur

Starting and maintaining a police K-9 program is a costly venture, more than the budget of Chelan County can sustain. A single police dog costs over \$25,000.00 (per dog) to get on the road. This includes the initial cost of the dog, training out of the area for both the dog and handler, modifying a police vehicle, and all of the handlers' and dogs' equipment. Without donations and its own annual fundraiser called K9s & Wines held at Pybus Market, Chelan County would not be able to sustain a K9 Unit. Please consider

donating to support your Sheriff's office K-9 Unit.



Asa



Majky

Campus Security

In 2018, the Chelan County Sheriff's Office took over the oversight and supervision of the Campus Security staff. We currently have 2 full time Campus Security deputies that ensure the citizens and employees of Chelan County have a pleasant experience while visiting and working throughout the county campus. Campus Security also outsources to a local security company, the security screening check points at each court level.

**Chelan County Court Level
Visitors Screened in 2018**

SUPERIOR COURT:

January:	4448
February:	4000
March:	4528
April:	4315
May:	4386
June:	4052
July:	4213
August:	5009
September:	3914
October:	5605
November:	4980
December:	3400
TOTAL:	52,850

DISTRICT COURT:

January:	3202
February:	3271
March:	3754
April:	3517
May:	3780
June:	3854
July:	4417
August:	4086
September:	3315
October:	3595
November:	3490
December:	3192
Total:	43,473

JUVENILE COURT:

January:	841
February:	497
March:	582
April:	797
May:	847
June:	529
July:	560
August:	779
September:	178
October:	688
November:	675
December:	455
TOTAL:	7428

**Past Years Combined Total for all Three
Court Levels**

2017:	106,762
2016:	104,532
2015:	101,854
2014:	103,032

The below listed items were secured, safe kept or seized for the Year of 2018

SUPERIOR COURT:

KNIVES: -----	1,994
LEATHERMEN: -----	1,132
SCISSORS: -----	112
OC PEPPER SPRAY: ----	194
AMMUNITION: -----	20
GUNS: -----	0
DRUGS/PARA: -----	22
HANDCUFF KEYS: -----	32
STUN GUNS: -----	37
TASERS: -----	1
VAPE PENS: -----	516
E-CIGGARETTES (ESD):-----	29
MISC. ITEMS: -----	944
TOTAL ITEMS: -----	5,033
2017:-----	6,341

DISTRICT COURT:

KNIVES: -----	877
LEATHERMENS: -----	1,047
SCISSORS: -----	68
OC PEPPER SPRAY: -----	77
AMMUNITION: -----	30
GUNS: -----	0
DRUGS/PARA: -----	34
HANDCUFF KEYS: -----	18
STUN GUNS: -----	2
TASERS: -----	0
VAPE PENS: -----	187
E-CIGGARETTES (ESD):-----	57
MISC. ITEMS: -----	1,206
TOTAL ITEMS: -----	3,703
2017:-----	5,143

JUVENILE COURT:

KNIVES: -----	85
LEATHERMEN: -----	31
SCISSORS: -----	13
OC PEPPER SPRAY: -----	6
AMMUNITION: -----	0
GUNS: -----	0
DRUGS/PARA: -----	1
STUN GUNS: -----	1
TASERS: -----	0
VAPE PENS: -----	33
E- CIGGARETTES (ESD):-----	9
MISC. ITEMS: -----	125
TOTAL ITEMS: -----	304
2017:-----	384

Grand Total for 2018: 103,751

The Chelan County Traffic Enforcement Unit (TEU) consists of 1 Sergeant, 2 Traffic Deputies, and 1 Commercial Vehicle Deputy. They are responsible for performing traffic enforcement, drug interdiction on the highways, traffic safety education (schools and public meetings, etc.), and collision investigation within the county.

The CV Deputy's primary responsibility is working as the liaison between Public Works and the Chelan County Sheriff's Office. The Commercial Vehicle (CV) Deputy works within the county. The Sergeant is a Drug Recognition Expert that assists in investigations regarding drivers that are impaired by drugs other than alcohol. Duties normally consist of daily contact with Chelan County Public Works Road Superintendent and Foremen, traffic enforcement, and traffic investigations in the county. The two Traffic Deputies divide their time between traffic enforcement and training Sheriff's Office employees.

Yearly	TOTAL CONTACTS	TOTAL Warning	TOTAL Citation	TOTAL Infraction	OTHER ARREST
Team Totals	2503	921	51	615	23

2018 was a busy year for the Chelan County Sheriff's Office detectives. This division consists of one sergeant, three civil service detectives, and one rotational detective who rotates between patrol and the detective unit every 3 to 5 years.

Detectives were responsible for 334 incidents in 2018. One of these detectives also supervises 180 registered sex offenders that reside within Chelan County.

Notable cases of 2018 included:

The burglary and theft from the Chelan Golf Course led detectives to King and Pierce Counties, where multiple subjects were arrested. The case was made on fingerprint, DNA, and Social Media evidence.

A child pornography and sexual exploitation of a minor case which started in Pennsylvania eventually led to the arrest of a Wenatchee resident. After that suspect was interviewed, detectives hit the road to Whatcom County, served search warrants there, and arrested another man on similar charges.

The Sheriff's Office registered sex offender detective investigated a Manson resident, who was already a registered sex offender, for new accusations of child molestation. That sexual offender was booked into CCRJC and is currently pending new child sexual abuse charges.

Another Chelan County resident was arrested on multiple sexual assaults which occurred over a number of years, between Cashmere and Manson. That case took hundreds of hours to complete and is currently pending trial in Chelan County Superior Court.

Reserves

In 2018 the Chelan County Sheriff's Office conducted its 2nd Regional Reserve Academy. We graduated 5 law enforcement officers from 4 agencies. Represented were Chelan County Sheriff's Office, Wenatchee Police Department, Quincy Police Department and Grant County Sheriff's Office. These law enforcement officers went through an intensive 5 ½ month long academy to become "Extreme Volunteers". During this time, they studied such topics as Criminal Law, Traffic Law, Crisis Intervention, Domestic Violence Law, Defensive Tactics, Firearms, Patrol Procedures and several others. This culminated in testing their knowledge during mock scenarios and a comprehensive final. Once they passed that they received a certificate and were given a limited commission by the State of Washington. These fine men and women are now patrolling the streets and we couldn't be prouder of them.

The CCSO Reserve team currently has 4 members and they provided several hundred hours of patrol to the County. They served at Oktoberfest, Ice Festival, provided security for the Chelan County Fair among several other events throughout the County. 3 of the four deputies currently serve on the Chelan

County Regional SWAT Team as medics and drone operators. Our CCSO Deputies receive more training than any other agency in the State.

We held our 3rd annual Statewide Reserve Training weekend in September. The CCSO identified that many reserve officers and deputies around the State were lacking the training that many of their full-time counterparts get. For the past 3 years we have hosted a training especially for Reserve Officers around the State. This year we had close to 40 reserve officers representing 30 different agencies in the State. They receive over 24 hours of training in that weekend meeting the State requirement from the Criminal Justice Training Commission. It has been a huge success and the students look forward to it each year.

Reserve Deputy Matt Fluegge was selected as 2018 Volunteer of the Year.

CCSO continues to trail blaze when it comes to training and utilizing our Reserve Deputies. If you are interested in becoming a

Reserve Deputy please contact Sgt. Adam Musgrove at adam.musgrove@co.chelan.wa.us or visit our website under the Reserve tab.



Throughout 2018, the Chelan County Sheriff's Office Division of Emergency Management (CCEM) responded to several all-hazard emergent situations. The incidents included seven wildfires and one potential alpine dam failure. Emergency Management personnel also responded to fifty-four search and rescue missions. Several county and regional plans were either created or updated by CCEM staff during the year.

The County Emergency Management (CCEM) team is comprised of two full-time commissioned Sheriff's Office personnel (sergeant and deputy), one full-time EM Specialist 1 position, and two part-time EM Specialist 1 positions. CCEM is responsible for prevention, planning, mitigation, response and recovery efforts throughout the county related to all-hazard emergencies, disasters and search and rescue. We work closely with local fire districts, municipalities, other law enforcement agencies, county public works as well as state and federal agencies to accomplish these tasks. Further, hazardous material - EPCRA Tier II Reports - from local companies and public agencies are funneled to CCEM and made available to local emergency response personnel should an emergency arise at a specific facility. CCEM chairs the Local Emergency Planning Committee (LEPC) which is in place to monitor and plan for potential hazardous material incidents.

Chelan County Emergency Management continued to provide emergency management services to the cities of Wenatchee, Cashmere, Leavenworth, Entiat and Chelan via inter-local agreements in 2018. Further, the emergency management division is responsible for the coordination and response to all reported search and rescue incidents within in the county. This includes training and exercising with local volunteer search and rescue groups and our agency's trained SAR deputies. A USFS inter-local agreement is in place to provide deputy patrol coverage throughout the vast forested areas of the county in coordination with one USFS law enforcement officer. The forest deputy position is managed through the CCEM division of the Sheriff's Office.

Incidents in 2018

Eight Mile Lake Dam

In mid-March, Chelan County was notified by the

Icicle-Peshastin Irrigation District (IP-ID) of an "emergency condition" at the Eight Mile Lake Dam located in the Alpine Lakes Wilderness area south of the Icicle River drainage - approximately 10 miles southwest of Leavenworth, WA. The report by the IP-ID was specific to the age and condition of the dam and its ability to adequately reserve runoff from the watershed which had burned significantly during the 2017 Jack Creek Fire. The developing situation activated a county emergency declaration and multi-agency coordinated response to determine the exact condition of the 100+ year old alpine dam. Agencies began planning response, alerting and mitigation specific to a potential dam failure.

The State Department of Ecology Dam Safety Office, U.S. Forest Service, National Weather Service, Icicle-Peshastin Irrigation District and CCEM worked together over the next several months to develop an emergency response strategy and public alerting plan should the dam suffer a complete or partial failure. A failure would have effected residents along the Icicle River from Eight Mile Road downriver to its confluence with the Wenatchee River. Eventually, arrangements were made to fly an excavator to the dam site so the IP-ID could begin repair work on the earthen portion of the dam. By June, mitigation efforts had progressed to a point at which the emergency situation was downgraded and there was no longer an imminent threat of dam failure. The IP-ID, National Weather Service, Dam Safety and CCEM continue to monitor the dam utilizing real-time reporting from lake water depth gauges, a creek flow gauge below the dam and cameras in place near the site. All instrumentation was installed during emergency response.



2018 Wildfires

Chelan County experienced a moderate wildfire season when compared to previous years. The Cougar Creek Fire became the largest fire of the year and effected residents in the Entiat River Valley. Chelan County Emergency Management responded along with fire districts and state and federal agencies to assist with a total of seven wildfires during 2018. The following is a brief synopsis of the 2018 wildfire season in Chelan County:

Little Camas Fire - July 5, 2018 317 acres



The Little Camas Fire started on July 5th, in steep rugged terrain approximately 6 miles southwest of Cashmere, WA. The cause was never determined. The fire was contained by July 13th. No structures were damaged during the fire.

Rocky Reach Fire - July 13, 2018 3,386 acres



The Rocky Reach Fire was reported at 8:15pm on July 13th along Highway 97-ALT near Rocky Reach Dam about five miles north of Wenatchee. The fire was completely contained by July 16th.

Cougar Creek Fire - July 28, 2018 42,712 acres



The Cougar Creek Fire ignited on July 28th after a lightning storm moved through central Chelan County. The start location was 20 miles west of Entiat, WA in steep inaccessible terrain. By August 1st, the fire had grown to over 10,000 acres. In the end, no structures were lost and no residents were injured. The fire was finally contained in late August.

25 Mile Creek Fire - July 29, 2019 22 acres



The 25 Mile Creek Fire started on July 29th near 25 Mile Creek State Park on South Lakeshore Road west of Chelan, WA. The quick response by the local fire districts and DNR crews brought containment of the fire by the evening hours on July 29th.

Navarre Fire - July 31, 2018 165 acres



The Navarre Fire began adjacent to Highway 971 (aka: Navarre Coulee Road) on July 31st. The fire was suspicious in nature, but causation remains undetermined.

In 2018, the Chelan County Sheriff's Office responded to fifty-four (54) search and rescue (SAR) missions primarily within Chelan County. A few missions were organized to assist adjacent counties with SAR incident response. The vast majority of the 54 missions involved successful rescues of injured or lost climbers, hikers, rafters or off-road vehicle operators. The Sheriff's Office relies heavily on the Chelan County Volunteer Search & Rescue organization and the Chelan County Mountain Rescue Association when responding to many of these incidents. Without the assistance of the dedicated and highly trained volunteers, it would be nearly impossible to adequately respond to the number of missions our agency logs each year.

The Sheriff's Office relies heavily upon various volunteer organizations and individuals to assist during search and rescue situations. The Sheriff's Office cards all the volunteers as "Emergency Workers" so they can legitimately be involved in response while also being covered by the State of Washington for potential injuries and lost/damaged equipment. In 2018, the Chelan County Volunteer Search and Rescue (CCVSAR) organization logged over one hundred fifty (150) hours of volunteer assistance in responding to search and rescue missions. Chelan County Mountain Rescue (CCMR) assisted the Sheriff's Office with five SAR missions throughout the county.



High Profile SAR Missions

During 2018, the Sheriff's Office coordinated five separate missions on Mount Stuart alone. All of these missions required the assistance of Naval Base Whidbey Island since the situations involved climbers which were either injured, stuck, or deceased above a 7,500 foot elevation. The Navy operates Blackhawk rescue helicopters which can maintain a hover at the elevations.



One of the Mount Stuart missions involved a fatality when a climber accidentally fell over 250 feet while traversing a snow field above the Cascadian Couloir. That climber's body and his surviving climbing partner were eventually hoisted off the mountain by the Navy. Two other missions on Mount Stuart involved climbers sustaining severe injuries related to large rocks falling onto the climbers causing crushing injuries. A separate mission involved a climber who fell after he suffered equipment failure, suffered a severe leg injury while attempting to descend the southwest aspect of the mountain. Three other climbers had to be rescued after becoming stuck on the mountain without enough experience to safely descend on their own. The Chelan County Mountain Rescue team assisted with several of the Mount Stuart missions while the NAS Whidbey helicopter crews hoisted the subjects to safety.

Table Top Exercises

Leavenworth Christmas Lighting Festival

In November of 2018, Chelan County Emergency Management staff worked with the City of Leavenworth, Cascade Medical Center, Fire District #3, Confluence Health, the RIVERCOM 911 Communication Center, the Leavenworth Chamber of Commerce and several other local response agencies to conduct a large scale table top exercise. The CCEM staff designed the exercise which was intended to test emergency response, planning and scene management related to a mass casualty incident occurring in downtown Leavenworth. The mock scenario was specific to one of the busy and crowded lighting festival weekends. The EMS, Fire and Hospital participants in the exercise were given casualty numbers of over two dozen patients which had to be assessed, triaged and transported to medical facilities. Law enforcement objectives not only centered around assisting with the various levels of injured persons, but were also specific to crime scene preservation and the continued management the over 10,000 visitors which would be present in downtown Leavenworth on a Christmas Lighting Saturday evening. The table top exercise was well attended by all agencies and many improvements were made to existing response plans based on the conversations which took place during and after the mock response. CCEM plans to organize a similar exercise prior to next year's lighting event.



Columbia River Training and Exercise

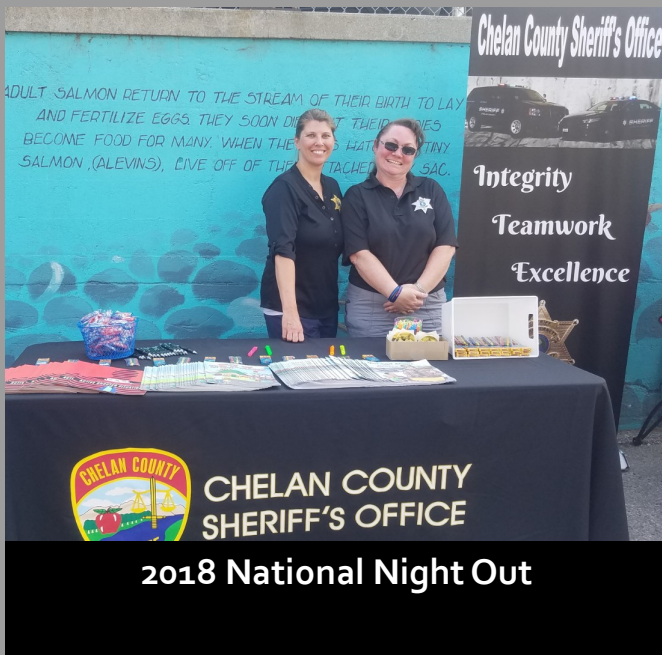
Chelan County Emergency Management organized and hosted a multi-agency training and exercise event specific to a hazardous material spill occurring in the Columbia River near Wenatchee. Training was conducted by the State Department of Ecology prior to the actual exercise. The functional exercise involved utilizing several vessels on the river to deploy boom in the current to mitigate a mock spill of petroleum into the river. Agencies involved in the training and exercise were: the State Department of Ecology, State Department of Fish & Wildlife, Chelan County PUD, Douglas County Sheriff's Office, Chelan County Fire District #1, the Washington State Patrol and Chelan County Sheriff's Office.

Washington state law requires that the Sheriff of each Washington state county serves the civil process of the courts within their jurisdiction. They are also required to accept and serve civil processes from all other Washington state counties. Civil processes include all types of papers resulting from civil litigation, including summons and complaints, subpoenas, court orders, writs of execution, writs of garnishment, and Evictions and Writs of Restitution (commonly known as eviction orders).

The service of civil process is based upon the information provided. Complete, accurate information (addresses, descriptions, place of employment, work hours, etc.) will assist us in ensuring successful service. There are fees associated for services, set by statute, which must be paid in advance.

2018 Civil Statistics

Total Civil Processes Served	1441
Total Criminal Subpoenas Served	1020
Total Writs of Restitution Served	35
Total Temporary Protection Order Served	63



Our Records staff at all of our public windows take great care of our day to day customers. People come into the CCSO lobby every day during business hours with hundreds of different needs and requests. Our Records staff are experts at providing, or finding, the answers to the questions they are approached with. When they are not busy greeting people with their exceptional customer service skills, they also have numerous duties that are invaluable to the Records Division and the entire Sheriff's Office.

In 2018, staff received and entered the following:

- Conceal Pistol Licenses (1,938), Public Disclosure Requests (2,228), Arrest Warrants (2,001), Protection Orders (411), Criminal Traffic Tickets (662), Criminal Non-Traffic Citations (396), Traffic Infractions (2,035), Parking Violations (199), Warning Tickets (3,007)



SHERIFF'S OFFICE



Contract City Stats



City of Cashmere	2018	2017	2016	2015	2014
City Patrol Hours	5555	6626	6504	6702	6977
Calls for Service	948	1115	1226	1033	948
Adult Arrests	52	60	67	54	110
Juvenile Arrests	4	10	17	27	14
Violent Offenses	1	2	6	0	0
Injury Traffic Collision	2	2	6	7	1
Non-injury Collisions	60	60	69	65	64



City of Chelan	2018	2017	2016	2015	2014
City Patrol Hours	16373	18728	18460	17796	19774
Calls for Service	2296	2469	2485	2302	2177
Adult Arrests	357	293	243	261	337
Juvenile Arrests	27	12	32	39	33
Violent Offenses	3	5	5	10	6
Injury Traffic Collision	12	8	21	11	5
Non-injury Collisions	144	121	145	94	129
Marine Related Offenses	59	48	49	43	90

City of Entiat	2018	2017	2016	2015	2014
City Patrol Hours	1283	2016	1963	1915	2324
Calls for Service	426	329	310	277	222
Adult Arrests	35	28	21	28	20
Juvenile Arrests	0	1	3	0	2
Violent Offenses	1	0	3	2	1
Injury Traffic Collision	1	3	2	1	1
Non-injury Collisions	17	14	15	7	10



City of Leavenworth	2018	2017	2016	2015	2014
City Patrol Hours	8952	10507	10453	10217	9449
Calls for Service	1534	1334	1498	1398	1267
Adult Arrests	108	73	89	70	137
Juvenile Arrests	10	14	9	20	32
Violent Offenses	2	3	3	0	1
Injury Traffic Collision	5	5	7	4	1
Non-injury Collisions	102	103	95	106	82



2018 Stats

Activity Summary	Cashmere	Chelan	Entiat	Leavenworth	Outside Cities	Totals
Adult Arrests	52	357	35	108	675	1227
Calls for Service	948	2296	426	1534	9469	14673
DV Incident	22	45	10	25	200	302
Fatality Collision	0	0	0	0	6	6
Injury Traffic Collisions	2	12	1	5	88	108
Juvenile Arrests	4	27	0	10	43	84
Marine Related	0	59	3	0	100	162
Non-Injury Traffic Collision	60	144	17	102	383	706
Violent Offenses	1	3	1	2	23	30
Warrant Arrest	103	239	53	79	806	1280

Arrests (Not DV or Traffic)	Cashmere	Chelan	Entiat	Leavenworth	Outside Cities	Totals
Alcohol	1	31	3	6	38	79
Arson	0	0	0	0	0	0
Assault	2	17	0	6	28	53
Burglary	0	0	0	1	12	13
Drug Violations	2	5	1	0	30	38
Forgery	0	0	0	0	0	0
Harassment	0	2	1	1	1	5
Malicious Mischief	4	1	0	1	9	15
Minor in Possession	2	9	0	2	9	22
Sex Offenses	1	3	0	1	2	7
Theft	0	24	0	6	10	40
Trespass	0	6	0	1	9	16
Other offenses	12	96	13	27	240	388
Total	24	194	18	52	388	676

Civil Process	
Cashmere Area	160
Chelan Area	212
Entiat Areas	30
Lake Wenatchee Area	6
Leavenworth Area	134
Wenatchee Area	970
Total	1512

Suicides	
Chelan County	5

2018 Stats

Reported Offenses	Cashmere	Chelan	Entiat	Leavenworth	Outside Cities	Totals
Alarm	29	92	13	45	367	546
Arson	0	0	0	0	1	1
Assault	30	87	17	62	343	539
Bomb Threat	0	0	0	0	0	0
Burglary	7	14	6	6	106	139
Child Abuse/Neglect	3	3	1	0	22	29
Disorderly	35	107	14	103	221	480
Drugs	8	48	0	4	135	195
DUI	7	99	0	25	160	291
Embezzlement	0	0	0	0	0	0
Forgery/Fraud/ID Theft	12	17	1	9	71	110
Gambling	0	0	0	0	0	0
Homicide	0	0	0	0	0	0
Kidnapping/Child Custody	0	0	0	0	1	1
Liquor Violations	3	14	3	6	11	37
Littering	1	4	2	1	60	68
Malicious Mischief	6	7	2	4	19	38
Marijuana	2	5	1	1	9	18
Noise	15	40	11	24	215	305
Robbery	0	0	0	0	1	1
Sex Offenses	7	8	4	10	53	82
Theft	37	101	7	69	218	432
Trespass	33	67	40	79	300	519
Vehicle Theft	1	6	1	0	16	24
Weapons	2	8	1	3	72	86
Total	238	727	124	451	2401	3941

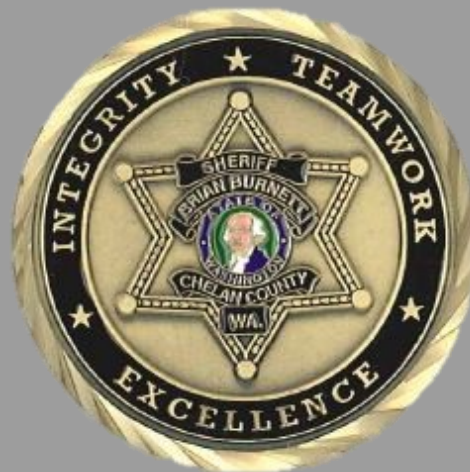
School	Cascade	Cashmere	Chelan	Entiat	Manson	Totals
Alarm	2	0	15	0	24	41
Assault	4	1	3	1	0	9
Drugs	0	2	4	1	0	7
Harassment	13	3	11	0	3	30
Malicious Mischief	1	0	0	1	0	2
Sexual Offense	4	2	0	1	0	7
Threatening	1	0	0	0	0	1
Theft	7	11	1	0	1	20
Other	49	61	21	11	14	156
Total	81	80	55	15	42	273

2018 Stats

Domestic Violence Arrests	Cashmere	Chelan	Entiat	Leavenworth	Outside	Totals
Assault	7	36	8	10	127	188
Child Rape/Molestation	0	0	0	0	0	0
Criminal Trespass	0	0	0	0	0	0
Harassment	0	1	0	1	4	6
Homicide	0	0	0	0	0	0
Interfere with DV Report	1	1	0	0	6	8
Kidnap/Unlawful	0	0	0	0	3	3
Malicious Mischief	3	5	0	2	16	26
Rape	0	0	0	0	0	0
Violation of Court Order	10	6	0	1	25	42
Totals	21	49	8	14	181	273

Contract City Patrol Hours	Cashmere	Chelan	Entiat	Leavenworth
January	568	1497	133	659
February	500	927	104	477
March	426	1132	92	624
April	553	1695	103	1231
May	491	1550.5	151.5	654
June	387	2207	60	757
July	290	2162	84	604
August	470	1233	245	700
September	542	1109	113	707
October	446	743	62	1378
November	339	947	53	445
December	376	1170	82	656
Total Patrol Hours	5388	16372.5	1282.5	8892

Violations	Cashmere	Chelan	Entiat	Leavenworth	Outside Cities	Total
Attempt to Elude Police Vehicle	0	0	0	0	0	0
Cell Phone Related	4	9	4	3	110	130
Defective Equipment	1	13	5	3	53	75
DUI / Physical Control	8	108	1	25	301	443
Driving While License Suspended	11	92	10	22	331	466
Hit and Run Attended	0	0	0	1	5	6
Hit and Run Unattended	1	3	0	1	13	18
Marine Violations	0	8	0	0	31	39
Negligent Driving	1	4	1	2	29	37
No Proof of Liability Insurance	25	129	22	14	515	705
Operator License Violations	15	69	16	10	317	427
Other Moving Violations	17	90	6	19	316	448
Other Offenses	1	16	1	1	49	68
Parking Violations	2	2	0	6	44	54
Pedestrian Violations	0	0	0	0	0	0
Reckless Driving	2	2	1	1	17	23
Seatbelt Violations	3	14	2	0	41	60
Speeding	11	171	152	21	965	1320
Speeding in Construction Zone	0	0	0	0	0	0
Speeding in School Zone	5	29	0	1	77	112
Vehicle License Violations	8	48	12	10	204	282
Total	115	807	233	140	3418	4713





**Sheriff
Brian Burnett**



**Undersheriff
Jason Mathews**



**Executive Assistant
Jan Brincat**



**Chief of Special
Operations
Jason Reinfeld**



**Chief of Patrol
Rick Johnson**



**Chief Civil Deputy
Kim Oglesbee**



**Sergeant
Jeff Middleton**



**Sergeant
Bruce Long**



**Sergeant
Kent Sisson**



**Sergeant
Jerry Moore**



**Sergeant
Mike Harris**



**Sergeant
Andy Zimmerman**



**Sergeant
Rob Huddleston**



**Sergeant
Chris Foreman**



**Sergeant
Kevin Files**



**Sergeant
Scott Lawrence**



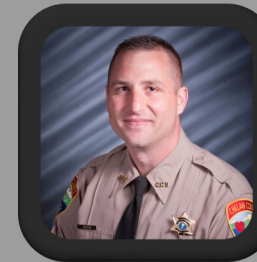
**Sergeant
Adam Musgrove**



**Corporal
Monika Haynes**



**Corporal
John Wisemore**



**Corporal
Jeremy Mathena**



**Corporal
Randy Lake**



Detective
Josh Mathena



Detective
Jeff Dilks



Detective
Randy Grant



Detective
Brett Peterson



Detective
Ernie Senseney



Deputy
Doug Corulli



Deputy
Sean Duke



Deputy
Mike Langford



Deputy
Carl Mohns



Deputy
Mike McLeod



Deputy
Dan McCue



Deputy
Matt Franklin



Deputy
Jennifer Tyler



Deputy
Lee Risdon



Deputy
Mark Hegberg



Deputy
Paul Nelson



Deputy
Chris Eakle



Deputy
Brad Norton



Deputy
Jeremy Mannin



Deputy
Dominic Mutch



Deputy
Mike Lamon



Deputy
Ryan Moody



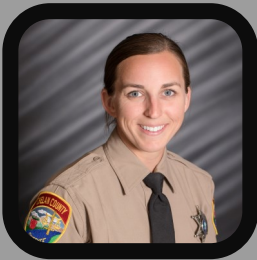
Deputy
David Flick



Deputy
Aaron Shepard



Deputy
Jerid Sutherland



Deputy
Daane Dunlap



Deputy
Mike Morrison



Deputy
Lucas McComas



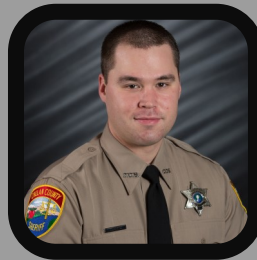
Deputy
Nigel Hunter



Deputy
Will Tuengel



Deputy
Ian Sutton



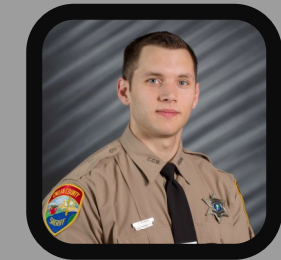
Deputy
James Peterson



Deputy
Austin Key



Deputy
Cole Soreano



Deputy
Zach Brunner



Deputy
Jerrod Biggar



Deputy
Brian Lewis



Deputy
Brent Frank



Deputy
Mike Carlson



Campus Security
Elgin Shaw



Campus Security
Michael Kenny



Evidence Custodian
Mitch Matheson



Records Supervisor
April Moore



Records Specialist
Lynne Orendor



Civil Deputy
Debra Foltz-Yonaka



Records Specialist
Peg Robert



Records Specialist
Rachel Jones



Records Specialist
Jen Ramm



Records Specialist
Karrie Wolsborn



Records Specialist
Dana Vivian



Records Specialist
Wendy Johnson



Records Specialist
Lanita Kottke



Civil Deputy
Juan Ruiz



Emergency Management
Rich Magnussen



Emergency Management
Stan Smoke



Emergency Management
Laura Kozma



Emergency Management
Diana Hogan



K-9 Majkey



K-9 Asa



K-9 Spur



K-9 Ruben

**2018
Retiree**



Deputy
Tim Erwert



Deputy of the Year

Ernie Senseney

Support Staff of the Year

Dana Vivian

Volunteer of the Year

Matt Fluegge

Sheriff's "Beyond the Badge" Award

Jessica Peterson

Honorary "Beyond the Badge" Award

Ret. Yakima County Sheriff Brian Winter

Lifesaver Recipients

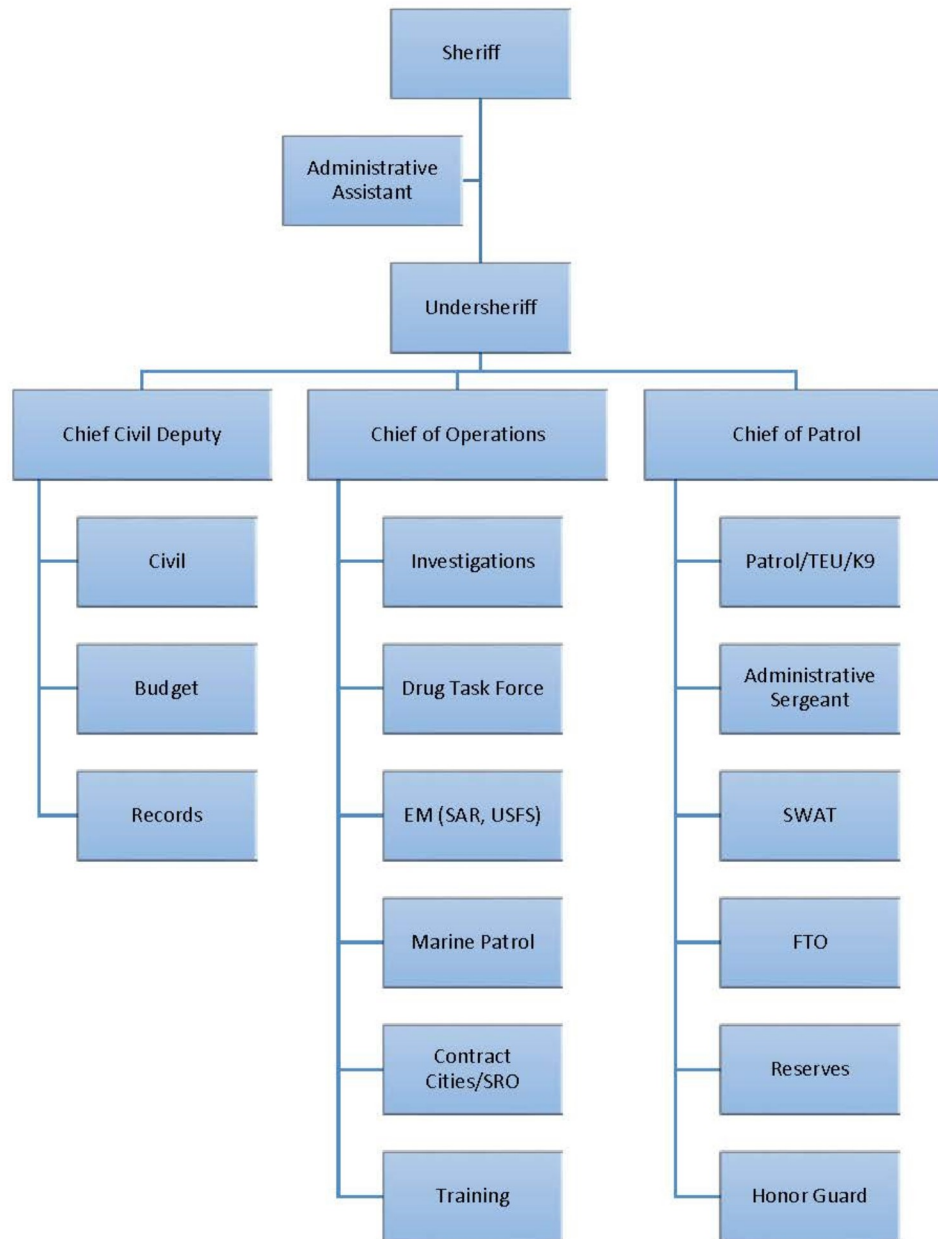
Jerry Moore
Scott Lawrence
Mike Morrison
Daane Dunlap

David Flick
Cole Soreano
Will Tuengel





Chelan County Sheriff's Office





Chelan County Sheriff's Office

The mission of our organization is to contribute to a safe and productive community, committed to earning public trust and providing highly trained professionals. We partner with the community, utilizing available resources to provide the highest quality of service to the citizens of Chelan County.

Integrity:

Serve with honesty, loyalty, consistency, and accountability with respect for others.

Teamwork:

Work together, demonstrating collaboration through mutual reliability and openness while displaying flexibility to accomplish our goals.

Excellence:

Deliver a superior level of commitment, responsiveness, performance and provision of services to all, with the attitude that, "Everything is worth our best effort".